



HONYA Lighting

Project Name: _____

Date: _____ Note: _____

LED LINEAR STRIP



Application: supermarket, warehouse, office, factory, commercial and industrial space

FEATURE

- Available in 4FT&8FT
- For single or continuous run row mounting
- Linkable: with wire harness connection kit included for connecting power between fixtures
- Surface or suspension mount option

OPTION

- Emergency Back-up
- Motion Sensor (On/Off or Bi-Level)

Certifications



SPECIFICATIONS

Model No	HYA-ST4FTXX-XXK	HYA-ST8FTXX-XXK
Power	24W/40W	40W/64W
Input Voltage	AC 110-277V	
Luminous Flux	24W: 3120 LM	40W: 5200 LM
	40W: 5200 LM	64W: 8320 LM
Efficacy	130 LM/W	
Power Factor	>0.9	
CCT	3000K/4000K/5000K	
CRI	>80	
Working Life	>50,000 hours	
Working Temperature	-10°F to 105°F	
Protection Level	Dry/Damp Location	
DLC Family Code	24W: CCCFSW	40W: CCCFSY
	40W: CCCFSX	64W: CCCFSZ
Qty/Pack	4	
Package Size	49.5"x7.5"x7.7"	98.8"x7.5"x7.7"
Package Weight	23.9 LB	41.5 LB

ACCESSORIES

Image	Description
	Suspension Mount Kit (Included)
	Alignment Bracket (Optional)

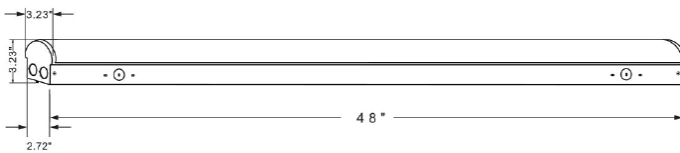
ORDERING CODE DEFINITION

EXAMPLE: HYA-ST8FT64-50K

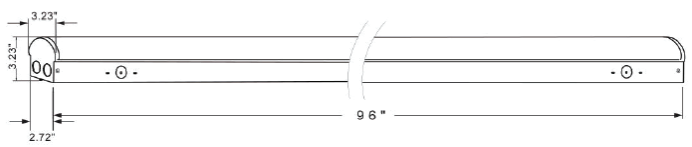
Company Code	Product	Length	Wattage	CCT
HYA	ST: Linear Strip	4FT	24: 24W or 40: 40W	30K: 3000K
				40K: 4000K
		8FT	40: 40W or 64: 64W	50K: 5000K

PRODUCT DIMENSIONS

4 FT:



8 FT:

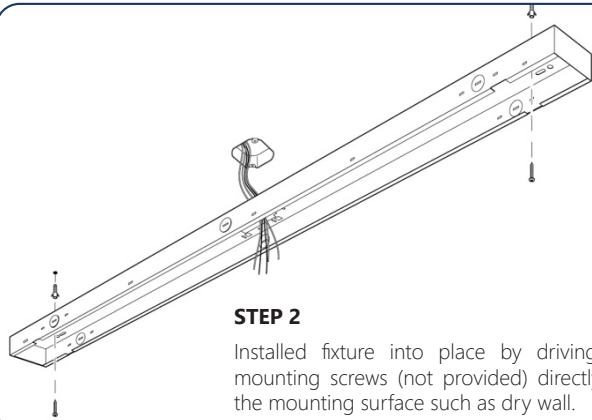


INSTALLATION INSTRUCTION

SURFACE MOUNT INSTALLATION

STEP 1

Disconnect the lens/light apart from the base housing part by slightly pressing the locking clip on the side of the fixture. Make sure the security cable is connected so the light part will be swing safely.



STEP 2

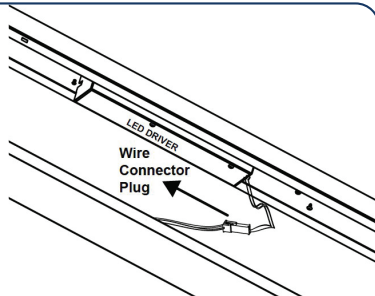
Installed fixture into place by driving two mounting screws (not provided) directly into the mounting surface such as dry wall.

STEP 3

Once the base housing part is installed to the ceiling surface, connect the wiring to the LED driver as below:

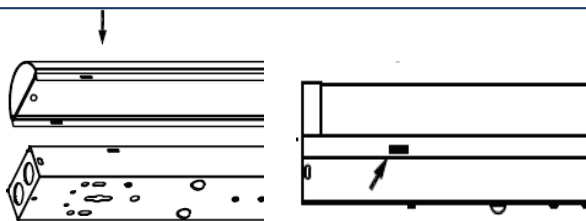
- Black = AC Line
- White = AC Neutral
- Green/Yellow = Ground
- Purple = Dimming (+)
- Gray = Dimming (-)

Once the wiring is completed. Make sure the lens/light part and base housing part is connected together using wire connector plug as figure 4



STEP 4

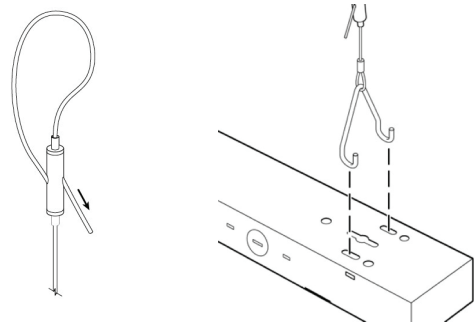
Install the light part back to the base part and you are all set



SUSPENDED MOUNT INSTALLATION

STEP 1

Disconnect the lens/light apart from the base housing part by slightly pressing the locking clip on the side of the fixture. Make sure the security cable is connected so the light part will be swing safely.



STEP 2

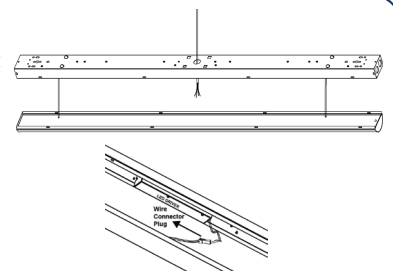
Lock the hanging cable and attached the hanging cable to the hook. Install the hooks to the back of the fixture by inserting into the two slots.

STEP 3

Once the base housing part is installed to the ceiling surface, connect the wiring to the LED driver as below:

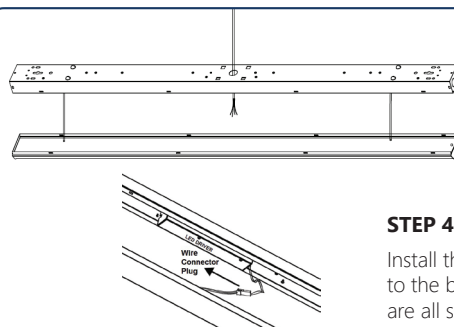
- Black = AC Line
- White = AC Neutral
- Green/Yellow = Ground
- Purple = Dimming (+)
- Gray = Dimming (-)

Once the wiring is completed. Make sure the lens/light part and base housing part is connected together using wire connector plug.



STEP 4

Install the light part back to the base part and you are all set



INSTALLATION INSTRUCTION

CONNECTION INSTALLATION

1. Remove the knock out on the end of the fixtures. Use a separate wire to connect the AC wire terminal together and repeat the connection for the natural wire terminal.
2. Connect the two dimmer wire as figure 1 if dimming function is needed.

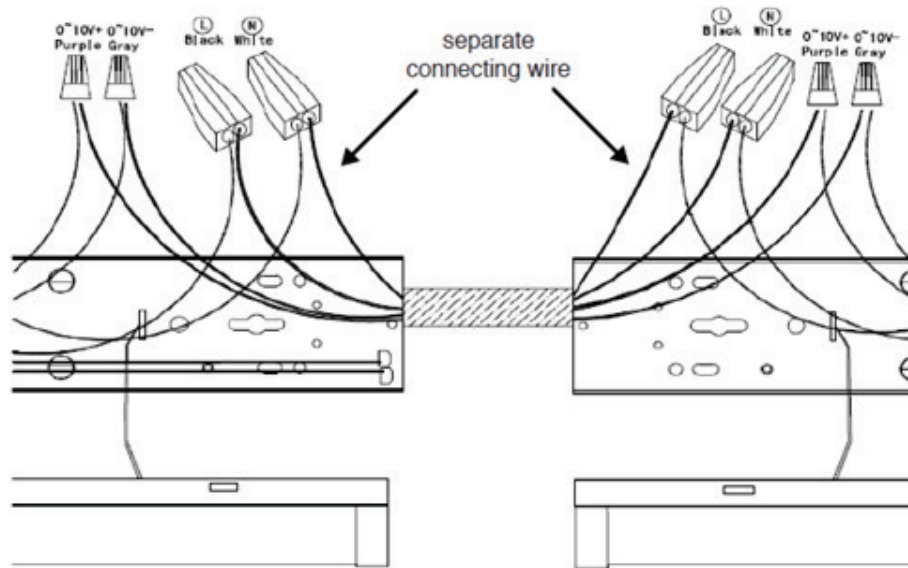


Figure 1

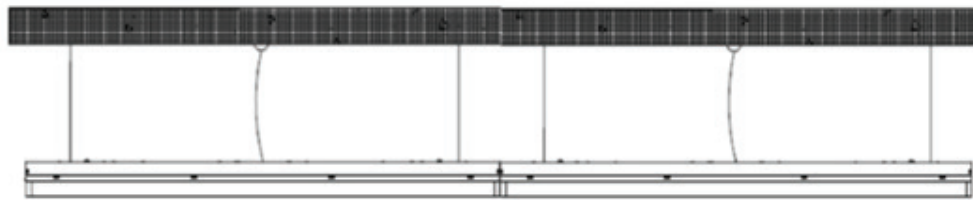


Figure 2

PHOTOMETRIC REPORT

