

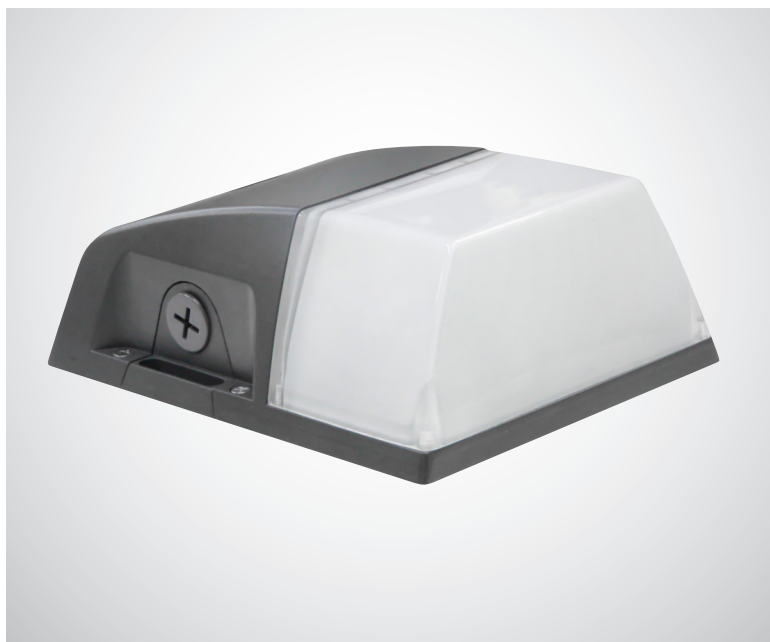


# HONYA Lighting

Project Name: \_\_\_\_\_

Date: \_\_\_\_\_ Note: \_\_\_\_\_

## LED MINI WALL PACK



### Certifications



**Application:** security, pathway and perimeter lighting, building entryways, walkways and much more

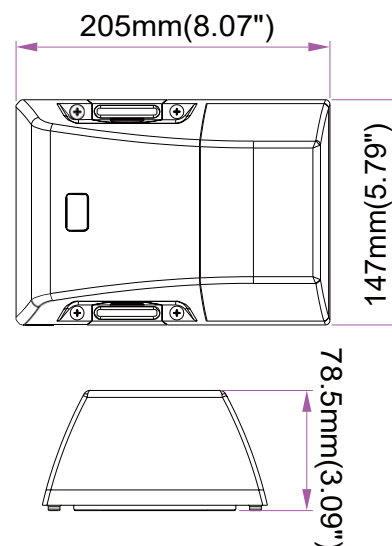
### Feature:

- Extremely easy for installation. With surface mounted kit, free disassembly, simple and fast installation, save much time.
- Delicate appearance and structure which can save lots of shipping and storage cost.
- Die-cast aluminum cooling design with better heat dissipation, LED Tj<185oF.
- Excellent optics design greatly improve the light utilization and uniformity.
- Pre-installed internal photocell which can automatically turn on at dusk and turn off at dawn, the energy is saved.

### SPECIFICATIONS:

SKU	HYA-MNWP-18W-P-5000K
Part No.	TS-WPK04-18W-H-50K
Wattage	18W
Rate Current	0.20A
Working Voltage	AC100-277V
Beam Angle	90o x 140o
Color Temperature	5000K
Luminous Efficacy	
Color Rendering Index	Ra>80
Operating Temperature	-40oF~ + 113oF / -40oC~ +45oC
Storage Temperature	-40oF~ + 158oF / -40oC~ +70oC
Environment Location	IP65 - Wet Location
Lifespan	50000H
Materials	ADC12
The color of the lamp shell	Brown
Mounting	Bracket fixed
Turn-on Light Level	<30Lux
Turn-off Light Level	>100Lux
DLC ID	PS6JQ958
Individual Package	8.34"x6.06"x3.38" / 212x154x86mm
PCS/ Master Pack	15 PCS
Master Package:	18.9"x8.94"x18.1" / 480x227x460 mm

### DIMENSIONS

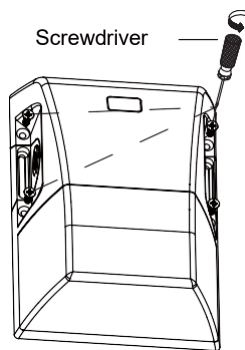


## ORDERING CODE DEFINITION

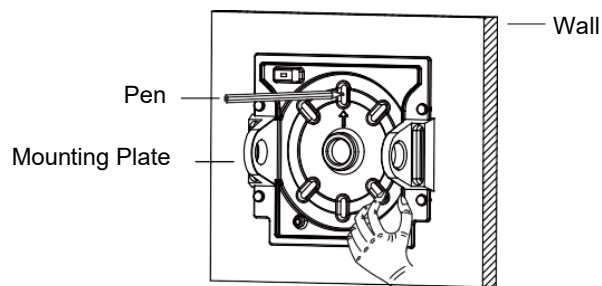
Example: HYA-MNWP-18W-P-5000K

Company Code	Product	Wattage	DLC	CCT
HYA: HONYA Lighting	MNWP: Mini Wall Pack	18W	P: DLC Premium Listed	5000K

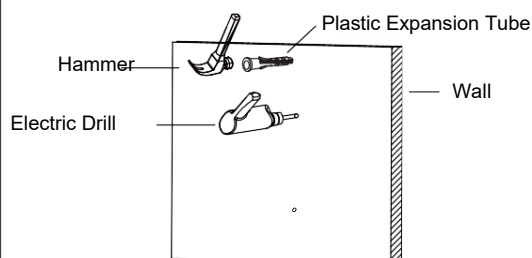
## INSTALLATION INSTRUCTION



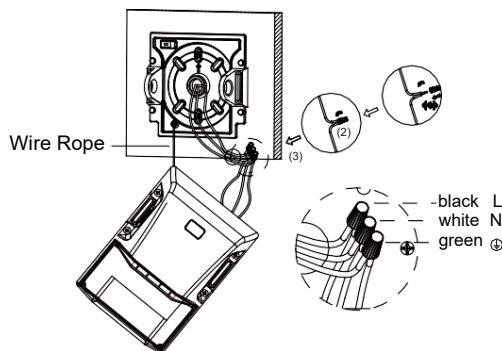
1. Disassemble the fixing screws of the lamp mounting plate with a screwdriver and remove the mounting plate;



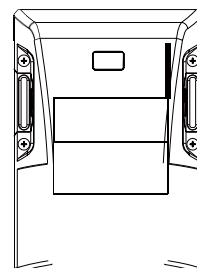
2. After knocking out the mounting holes with a hammer (at least 2 mounting holes and they should be in a symmetrical position), press the bracket on the wall with your hand and mark with the pen at the mounting screw position;



3. Use the electric drill to punch the hole at the mark position  $\varnothing 8\text{mm}$ , depth 40mm; and use a hammer to drive the plastic expansion tube into the hole;



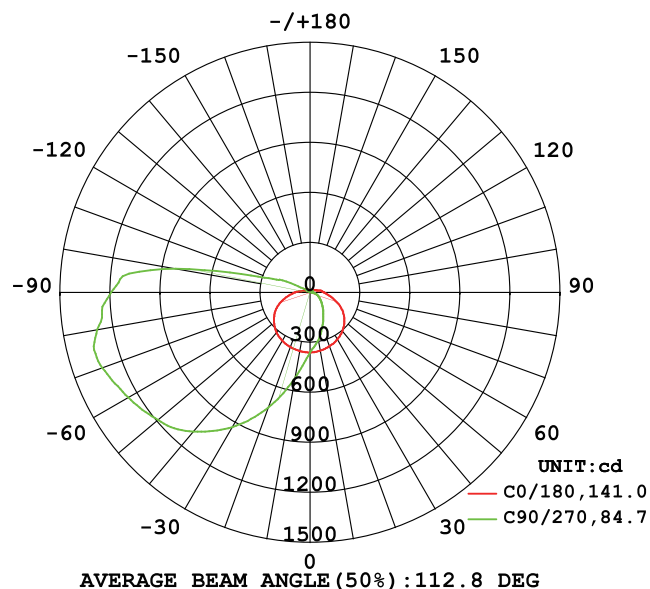
4. Fix the bracket with a screwdriver, and fix the fixture installation wire rope on the mounting plate, connect the cable as shown and do a good waterproof treatment;



5. Put the lamp back on the mounting plate and secure the screws to complete the installation.

## PHOTOMETRIC REPORT

### LUMINOUS INTENSITY DISTRIBUTION DIAGRAM



Flux out: 551.9 lm

Height	Eavg, Emax	Angle: 85.68deg	Diameter
1m	202.0, 460.9lx		185.46cm
2m	50.50, 115.21lx		370.93cm
3m	22.45, 51.21lx		556.39cm
4m	12.63, 28.81lx		741.86cm
5m	8.080, 18.44lx		927.32cm
6m	5.611, 12.80lx		1112.79cm
7m	4.123, 9.406lx		1298.25cm
8m	3.156, 7.202lx		1483.71cm
9m	2.494, 5.690lx		1669.18cm
10m	2.020, 4.609lx		1854.64cm

Note: The Curves indicate the illuminated area and the average illumination when the luminaire is at different distance.